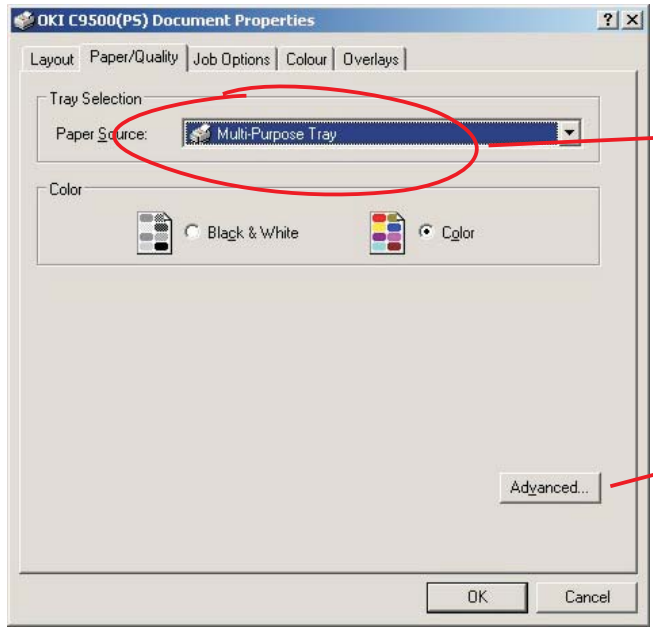


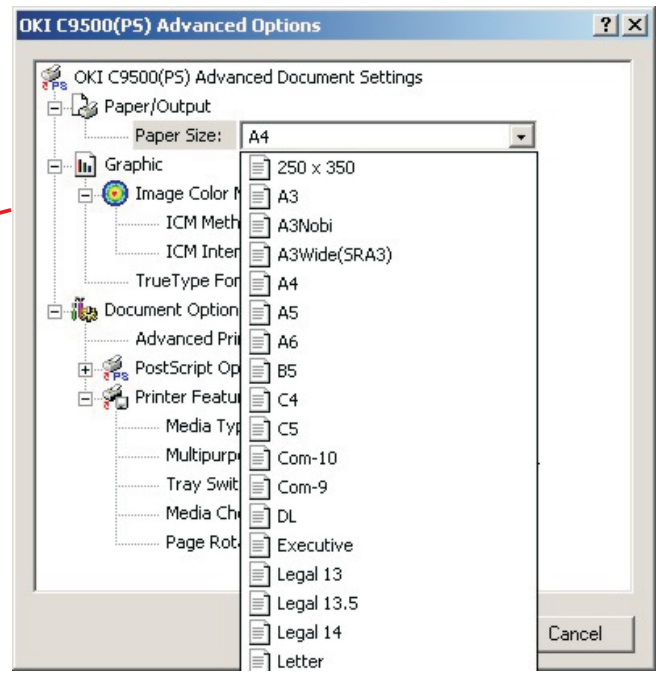
Select the printer OKI C9500(PS)

Composite and Print to file turned on

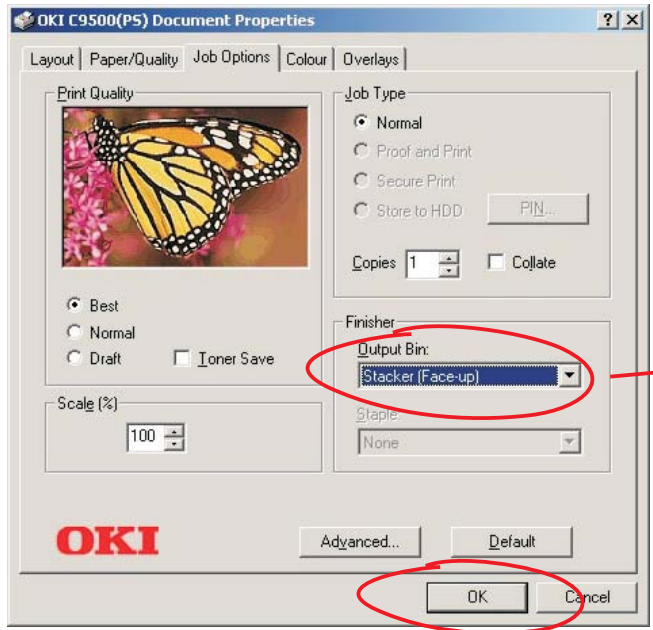
After that select the " Properties"...



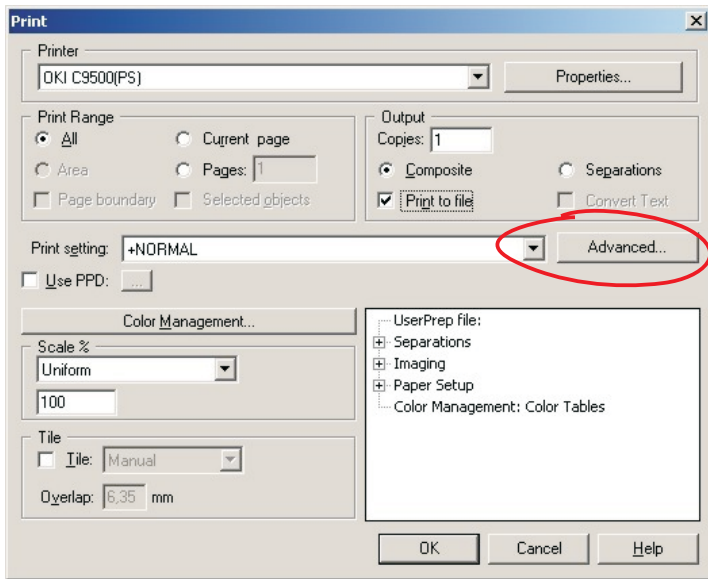
Turn on Multi Purpose Tray on Paper/Quality



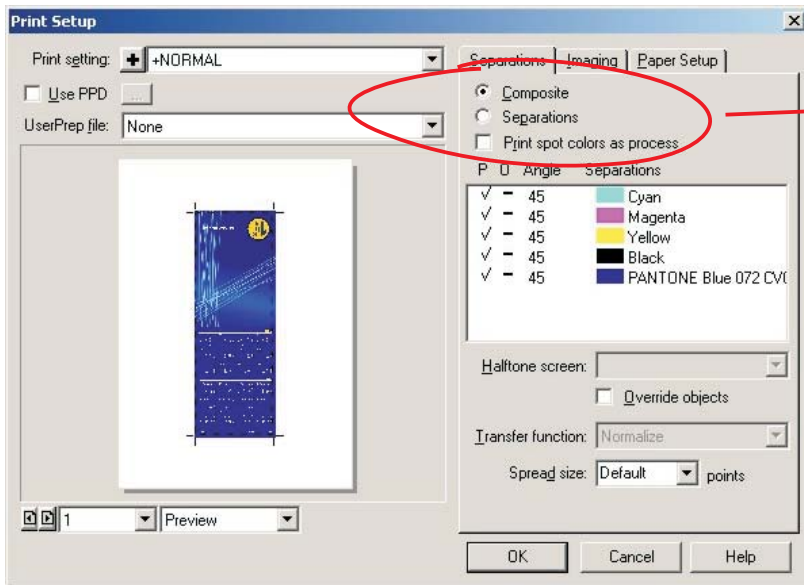
Select the Paper Size max: 440x312 mm



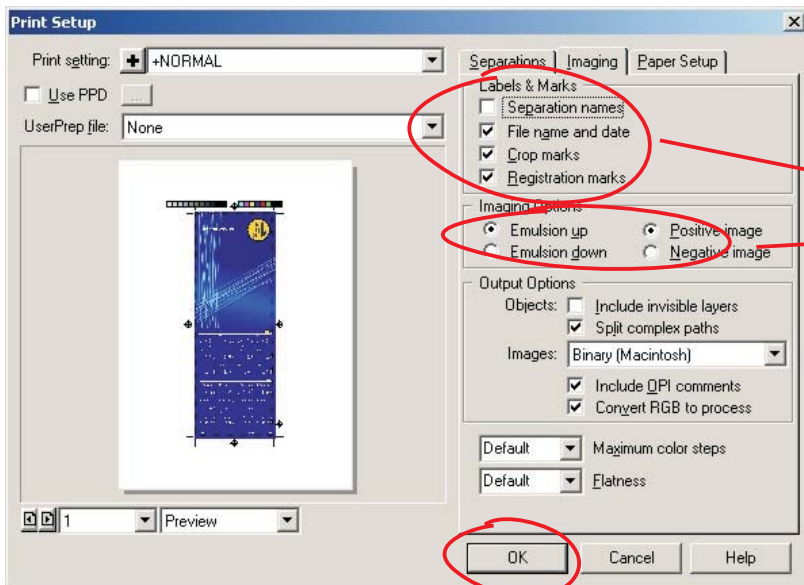
In Job Options turn on Face Up



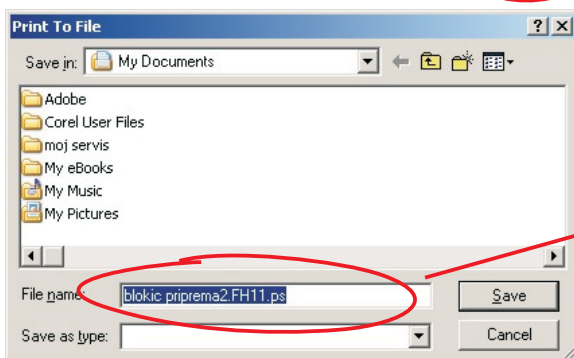
Turn on "Advanced" option



Turn on Composite to make the trial print



Adjust Setup as shown in the picture



Select the document name and save